



K20

FLEXIBILITY for a variety of jobs

Fully radio controlled K20 is able to carry out any use in a wide range of applications; its weight less than 2000 kg allows easy transport on conventional trailers or vans.

Due to its compact and robust design can be equipped with a basket in total safety.

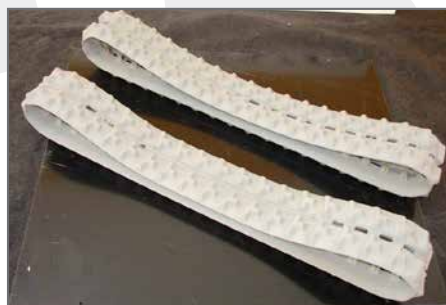
Main performance:

- 2050 kg at 1 m
- Ready for the basket
- Remote control
- Electric system for the control of maneuvers

TORO ITALIA and his team are able to create any solution needs to meet your requirements.



Remote control



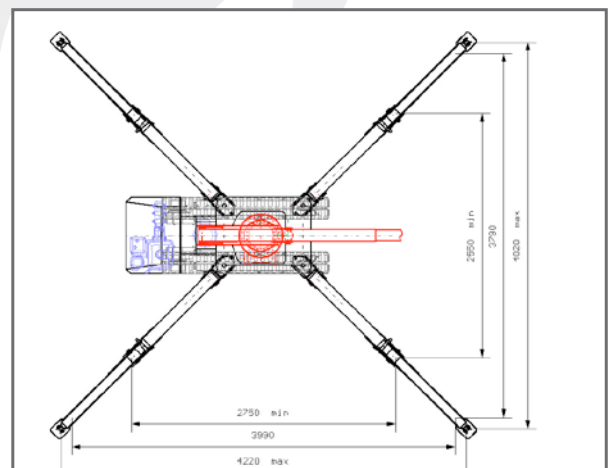
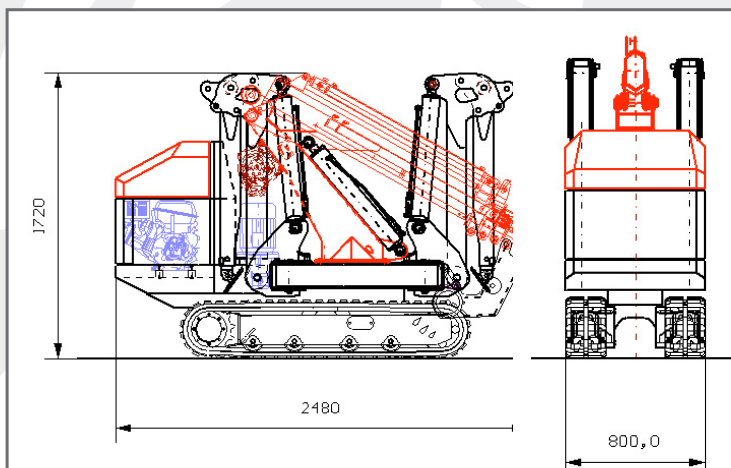
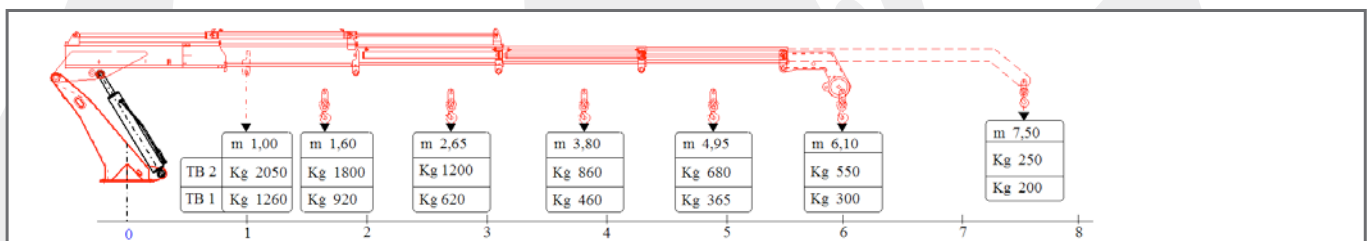
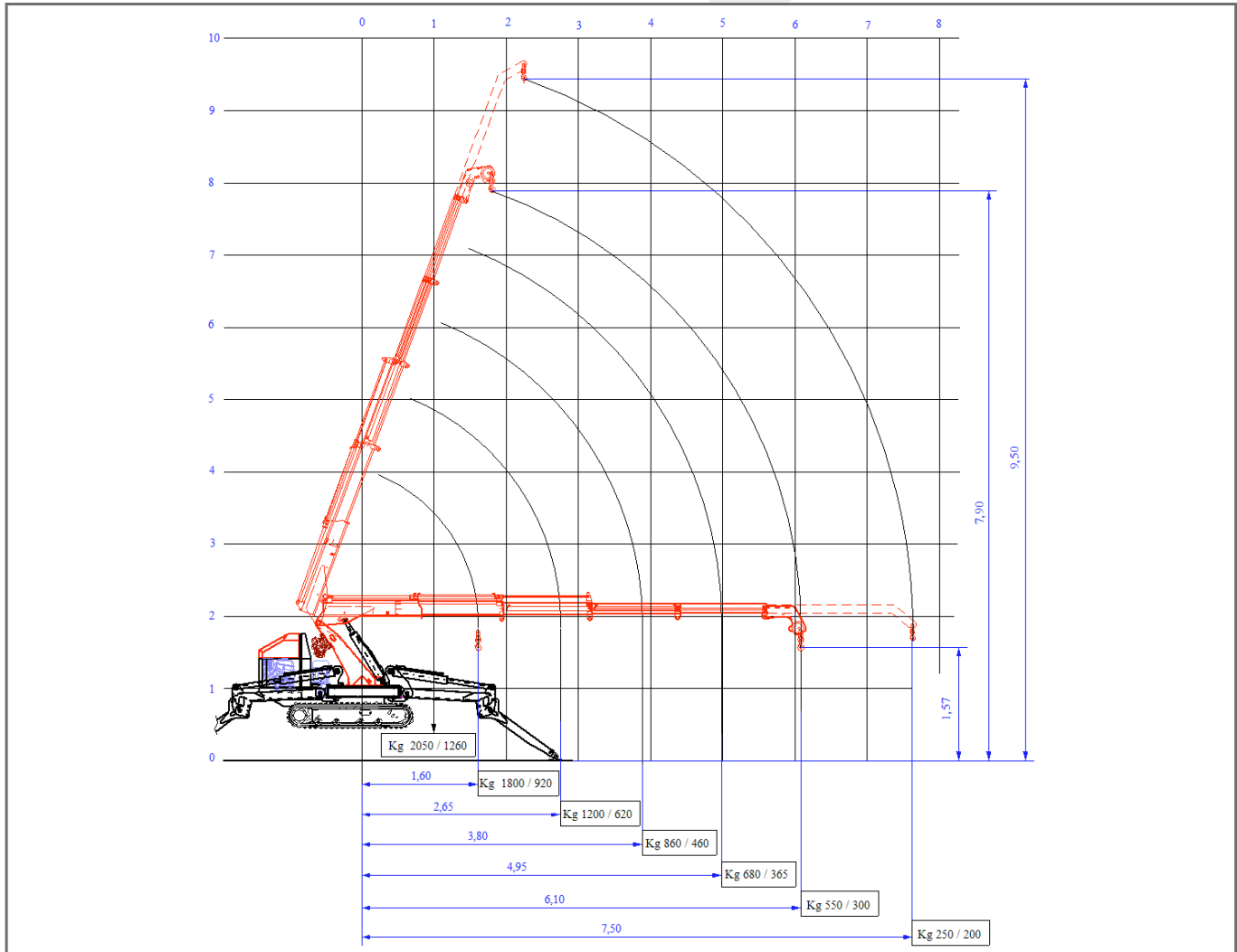
White cingulate



Basket



minicranes



minicranes

K20

MAX CAPACITY:		2050 Kg x 1 m
ENGINE:	Model:	Kohler ch440
	Type:	14 Hp a 3400rpm
	Power:	Petrol
	Tank capacity:	9L
	Starting method :	Electric
ELECTRIC MOTOR:	Type:	2,2Kw/6kw
	Size:	220V/380v
WINCH ROPE LENGTH:	Size:	Ø8 mm x 30 m
	Single line speed:	40M/min
	Hook speed:	13M/m (3 line)
DIMENSIONS:		2480 X 800 x 1720 mm
WEIGHT:	Standard Version:	1700 Kg
	Eletric Version:	1850 Kg
TELESCOPIC SYSTEM:	Boom length:	7,50 m
	Telescopic speed:	Total extension 35 sec
	Boom type:	4 Section esagonal elescopic boom automatic
	Maximum lifting height:	9,5m
	Slew angle / speed:	-10° + 70° / 20 Sec
SLEW SYSTEM:		370° With return
OUTRIGGER SYSTEM:	Type:	Hydraulic cylindres with lock valves
	Transmission:	Hydrostatic type, continue and irreversible
	Travel speed:	0-3 Km/h
TRACTION SYSTEM:	Gradability:	50-55%
	Ground length x width:	1450 X 230mm
	Ground pressure:	0,25 Kg/cm ²
CONTROL SYSTEM MINI CRANE:		Radio remote control - 30 m
STANDARD EQUIPMENT:	Hidraulic safety valves, automatic stop slew system, tilt alarms, analogic and digital counter, black rubber tracks, work light, visual indicator angle of telescopic system	
OPTIONAL EQUIPMENT:	Eletric winch, eletric motor with hidraulic pump, white rubber tracks, jib	



minicranes

