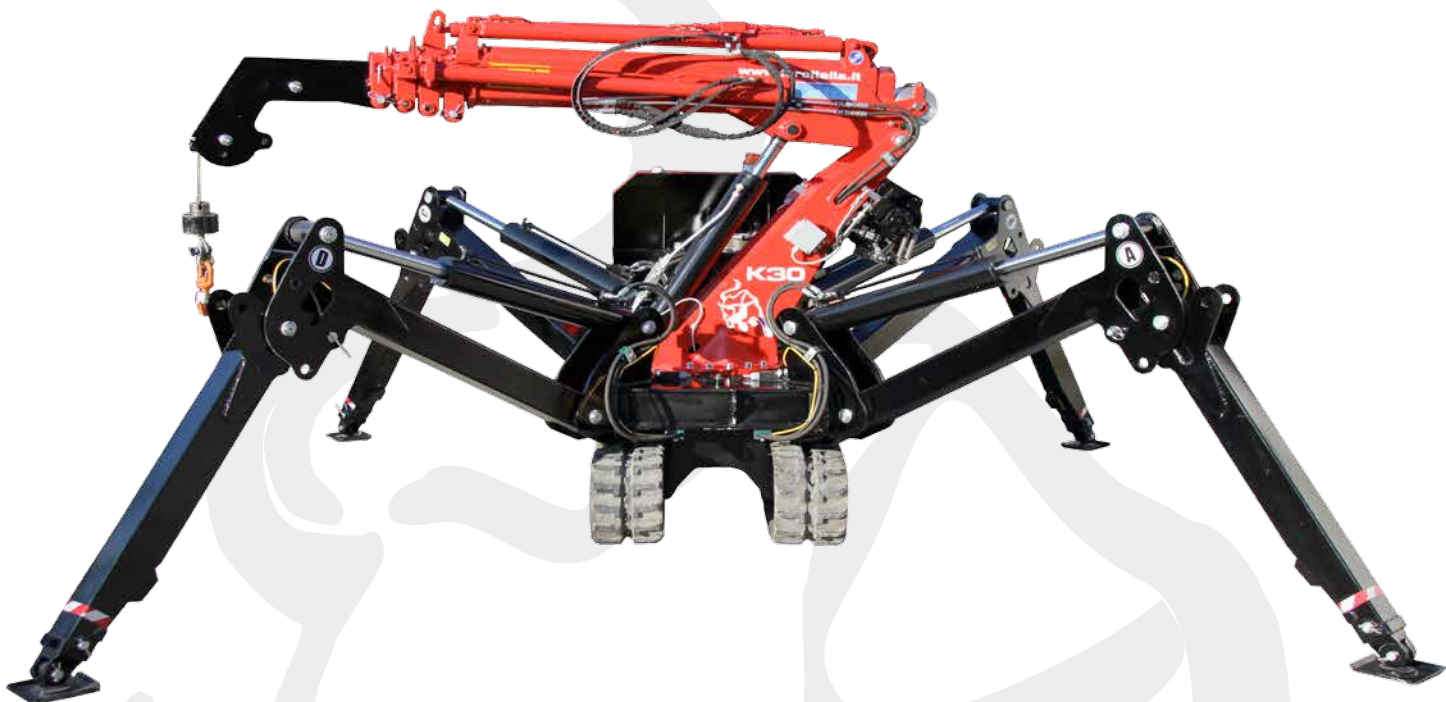


# K30



## POWER, EFFICIENCY AND VERSATILITY at your service

K30 mini crane is produced with superior optics to work in confined spaces, handling of glass for facades, application of lifting of any materials.

Structured and carefully designed to facilitate an investment to rent for end users.

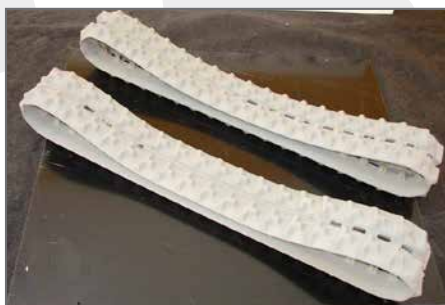
### Main performance:

- 3000 Kg at 3m
- Installation of windows
- Remote control
- Moving around on uneven ground
- General lifting

**TORO ITALIA** and his team are able to create any solution needs to meet your requirements.



Remote control



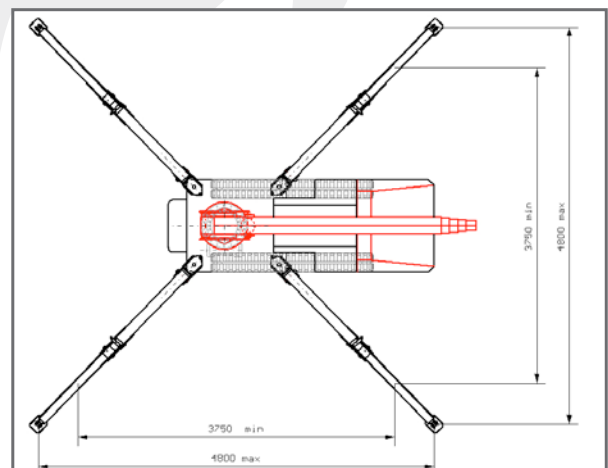
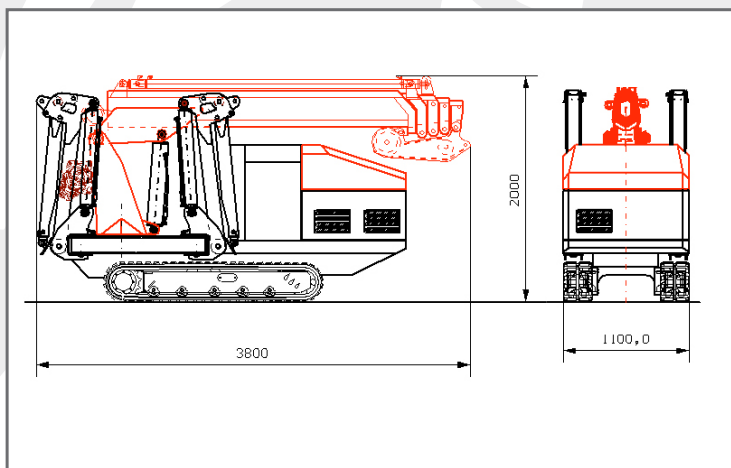
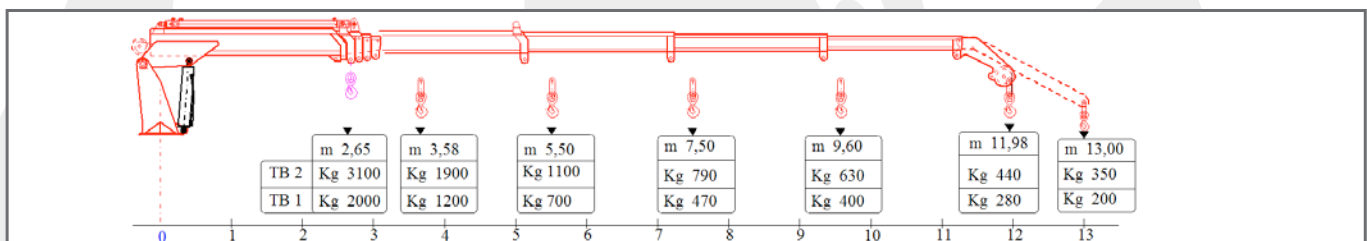
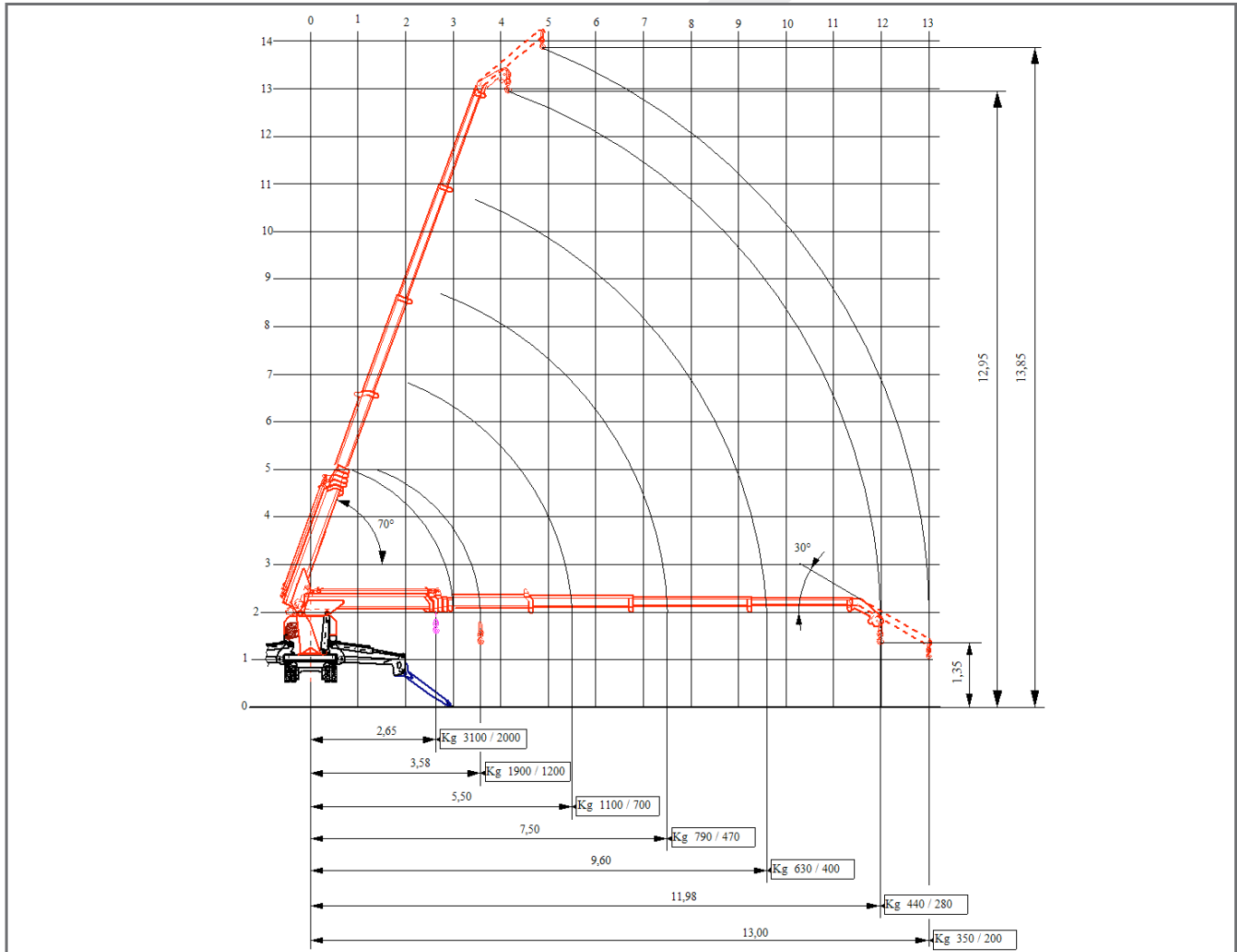
White cingolate



Basket



# minicranes



# minicranes

## K30

MAX CAPACITY:		3000 Kg x 3 m
ENGINE:	Model:	Yanmar 3tnv67
	Type:	15,2Kw x 2500 rpm water cooling
	Power:	Diesel
	Tank capacity:	20L
	Starting method:	Electric
ELECTRIC MOTOR:	Type:	2,2Kw/6kw
	Size:	220V/380v
WINCH ROPE LENGTH:	Size:	Ø8 mm x 30 m
	Single line speed:	40m/min
	Hook speed:	13m/m (3 line)
DIMENSIONS:		3800 X 1100 x 2000 mm
WEIGHT:	Standard Version:	3700 Kg
	Eletric Version:	3900 Kg
TELESCOPIC SYSTEM:	Boom length:	13 m
	Telescopic speed:	Total extension 40 sec
	Boom type:	4 Section esagonal telescopic boom automatic
	Maximum lifting height:	12,95 m
	Slew angle / speed:	-10° + 70° / 20 Sec
SLEW SYSTEM:		370° With return
OUTRIGGER SYSTEM:	Type:	Hydraulic cylindres with lock valves
TRACTION SYSTEM:	Transmission:	Hydrostatic type, continue and irreversible
	Travel speed:	0-3 Km/h
	Gradability:	50-55%
	Ground length x width:	Ground width 250mm
	Ground pressure:	0,50 Kg/cm <sup>2</sup>
CONTROL SYSTEM MINI CRANE:		Radio remote control - 30 m
STANDARD EQUIPMENT:	Hidraulic safety valves, automatic stop slew system, tilt alarms, analogic and digital counter, black rubber tracks, work light, visual indicator angle of telescopic system	
OPTIONAL EQUIPMENT:	Eletric winch, eletric motor with hidraulic pump, white rubber tracks, jib	



# minicranes

